

ATEX SCALES

**2/22
ZONE**



ZONE 2

- » Printers
- » Spray painting plants
- » Petrol stations (areas that are accessible to customers)
- » Textile and dyeing plants
- » Chemical industry
- » Waste processing plants
- » Petrochemical industry
- » Pharmaceutical industry
- » Plastics factories
- » Furniture factories

ZONE 22

- » Cereal mills
- » Waste treatment plants
- » Textile industry
- » Chemical industry
- » Waste processing plants
- » Pharmaceutical industry
- » Woodworking machinery
- » Cereal, legume and coffee warehouses

WEIGHT INDICATOR FOR CLASSIFICATION 2 & 22 ATEX ZONES IN GROUP II, CATEGORY 3

- » **Zone 2:** places where flammable gases or vapours are unlikely to be present or are present for short periods of time.
- » **Zone 22:** places where combustible dust is unlikely to be present or is present for short periods of time.

PROTECTION METHODS IN ACCORDANCE WITH:

- » ATEX II 3G Ex nR IIC T6 Gc X (for gases)
- » ATEX II 3D tc IIIC T85°C Dc IP68 (for dust)

BMX

BENCH SCALE

DOBLE MARCO TUBULAR

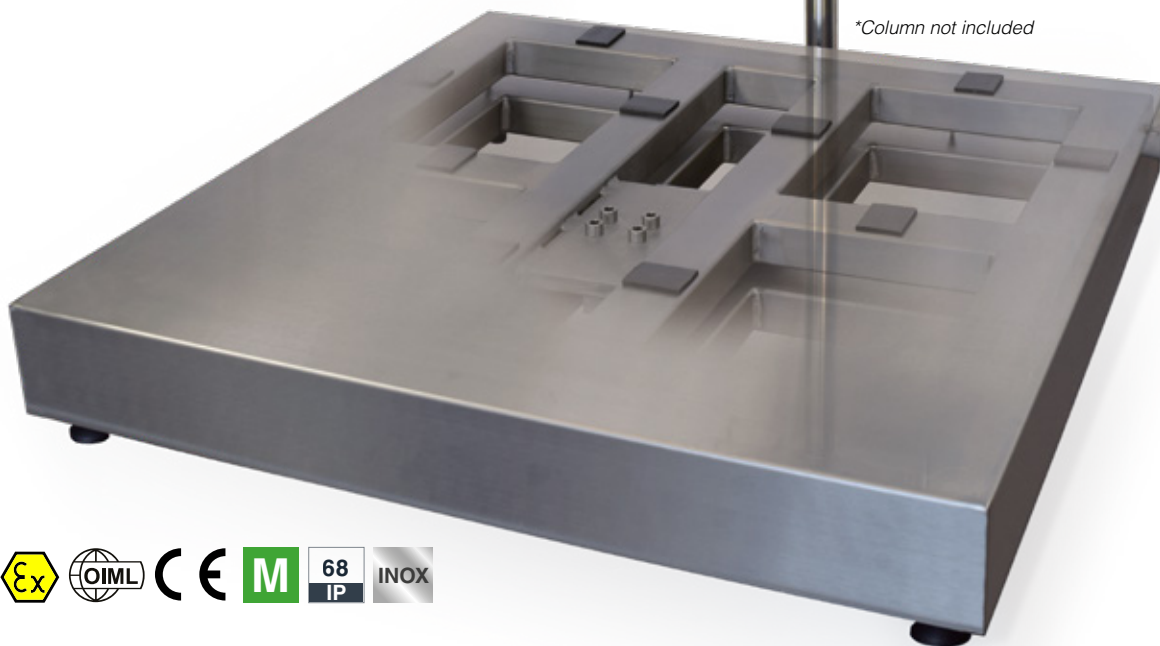
Scales with platform with double tubular frame and load cell in stainless steel.

Light sheet to be removed and open structure designed to be cleaned and moved easily.

Multi-dimensional scale with GI400i EX indicator for **ATEX 2/22 zone**.



*Column not included



INDICATOR FUNCTIONS

- » REPEATER
- » PIECE COUNTING
- » TOTALISATION
- » CHECKWEIGHER
- » NEGATIVE CHECKWEIGHER
- » LIMITS
- » DOSAGE
- » More than 30 protocols
- » System of 2 passwords to lock out functions
- » 8 format of predefined tickets and 1 customizable (associated software)
- » Printing configurable menu: number of copies, cutter on/off, line feed
- » Watchdog system to reset automatically if the indicator gets blocked

PRINTING

- » Programmer of three headings (PC), code and total.

LANGUAGES

- » English, French, Italian, Portuguese and Spanish

METROLOGICAL SPECIFICATIONS

- » III and IIII classes
- » Max. number of verification steps 6000
- » Monorange, multirange or multiinterval (n ≤ 3000, per partial range of weighing)

SOFTWARE*

- » For monitoring, management and control of access to the weighing system



*contact us for more information

BMX

FOR 2/22 ZONES

INDICATOR FEATURES

- » Operation in zones 2/22 via power supply
- » Working temperature -10°C to 40°C
- » Stainless steel housing
- » Reclining wall support
- » Units: kg
- » Other features:
 - » Integrated clock and calendar
 - » Format tickets with configurable weighing code
- » LCD display:
 - » Display with 6 digits of 40mm
 - » Backlight function: On/off/auto
 - » Screen colour indication with checkweigher function
- » 2 RS232 output



Cable glands for ATEX zones

LOAD CELLS FEATURES

- » Completely made of stainless steel.
- » High quality protection barrier with special silicones.
- » 6-wire cable.
- » Protection IP 68 | IP 69k
- » OIML approval 3000 divisions OIML R60 class C
- » ATEX version

LOAD CELLS

- » **190i:** Platform 400 x 400 mm de 30 and 60 kg | Stainless steel | 3000 divisions OIML R60 | Protection IP69k.
- » **IBM 1:** Platform 400 x 400 mm de 150 kg | Plataformas 500 x 500 mm | Stainless steel | 3000 divisions OIML R60 | Protection IP67.
- » **IBM 2:** Platform 600 x 600 mm | Stainless steel | 3000 divisions OIML R60 | Protection IP68.
- » **IBM 3:** Platform 800 x 800 mm. | Stainless steel | 3000 divisions OIML R60 | Protection IP67 - IP68.

REFERENCES

Dimensions (mm) A x B	Capacity (kg)	Readout (g)	
400 x 400	30	10	AVAILABLE IN 2 VERSIONS OF PLATFORM: V1 PAINTED STRUCTURE AND STAINLESS STEEL SHEET V2 COMPLETELY STAINLESS STEEL AISI-304
400 x 400	60	20	
400 x 400	150	50	
500 x 500	30	10	
500 x 500	60	20	
500 x 500	150	50	
600 x 600	60	20	
600 x 600	150	50	
600 x 600	300	100	
800 x 800	300	100	
800 x 800	600	200	

- » ATEX II 3G Ex nR IIC T6 Gc X (for gases)
- » ATEX II 3D tc IIIC T85°C Dc IP68 (for dust)

Accessories

- » Column

BEX

EXTRAFLAT SCALES

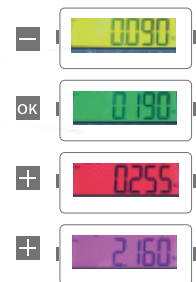
The load cells and the junction box are kept inside the sides of the scale platform, made by an angle profile, which at the same time act as a structural element of the platform.

To guarantee the platform position, four root plates are fixed on ground using anchor bolts, and stoppers are added for the feet of the load cells.

4-load cell multi-dimensional scale with GI400i EX indicator for **ATEX 2/22 zone**.

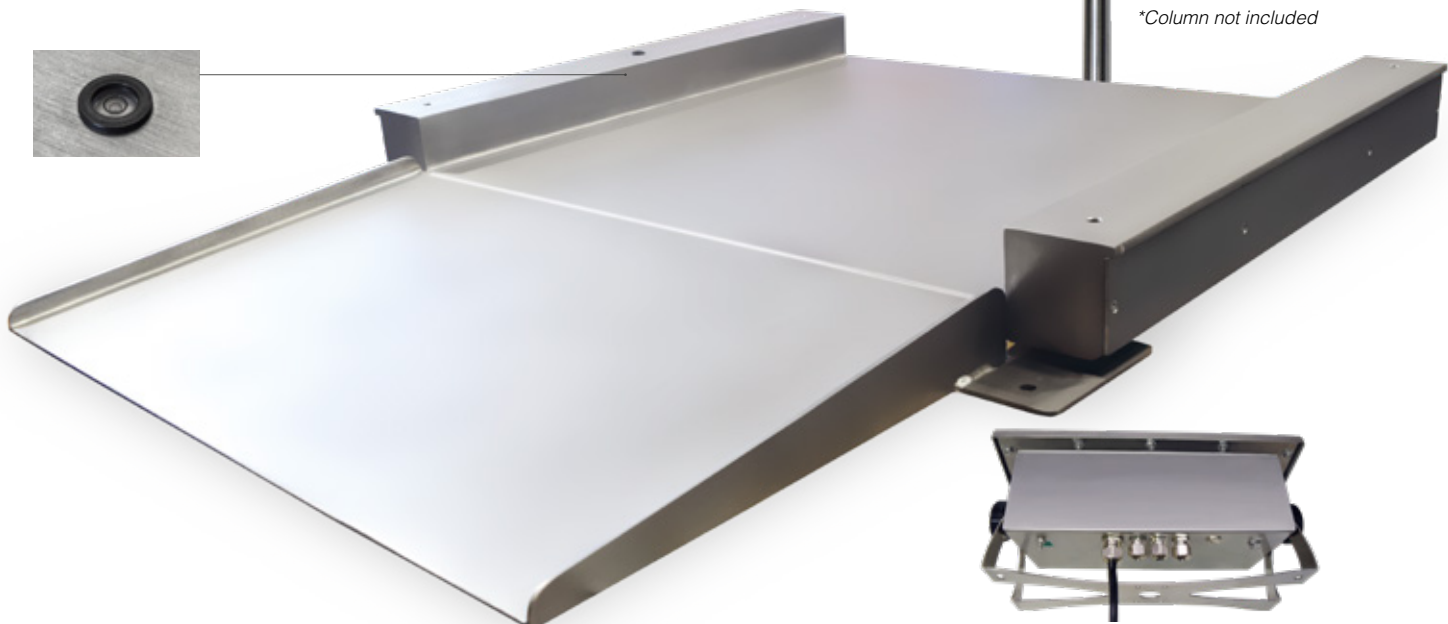


CHECKWEIGHER FUNCTION



With visual value alarm

*Column not included



Cable glands for ATEX zones

INDICATOR FUNCTIONS

- » REPEATER
- » PIECE COUNTING
- » TOTALISATION
- » CHECKWEIGHER
- » NEGATIVE CHECKWEIGHER
- » LIMITS
- » DOSAGE

- » More than 30 protocols
- » System of 2 passwords to lock out functions
- » 8 format of predefined tickets and 1 customizable (associated software)
- » Printing configurable menu: number of copies, cutter on/off, line feed
- » Watchdog system to reset automatically if the indicator gets blocked

PRINTING

- » Programmer of three headings (PC), code and total.

LANGUAGES

- » English, French, Italian, Portuguese and Spanish

METROLOGICAL SPECIFICATIONS

- » III and IIII classes
- » Max. number of verification steps 6000
- » Monorange, multirange or multiinterval (n ≤ 3000, per partial range of weighing)

SOFTWARE*

- » For monitoring, management and control of access to the weighing system



*contact us for more information

BEX

FOR 2/22 ZONES

INDICATOR FEATURES

- » Operation in zones 2/22 via power supply
- » Working temperature -10°C to 40°C
- » Stainless steel housing
- » Reclining wall support
- » Units: kg
- » Other features:
 - » Integrated clock and calendar
 - » Format tickets with configurable weighing code
- » LCD display:
 - » Display with 6 digits of 40mm
 - » Backlight function: On/off/auto
 - » Screen colour indication with checkweigher function
- » 2 RS232 output

LOAD CELLS

- » **350i v ATEX:** Stainless steel | 3000 divisions OIML R60 | Protection IP68 | IP69k.

JUNCTION BOX

- » ATEX certified hermetic aluminium junction box.

STRUCTURE FEATURES

- » Thickness of the sheet: 5 mm
- » Height surface: 50 mm / total height: 115 mm



LOAD CELL FEATURES

- » Completely made of stainless steel.
- » Hermetically sealed, fully welded.
- » Protection IP 68 | IP 69k
- » OIML approval 3000 divisions OIML R60 clase C
- » ATEX version



ATEX zones cable glands

REFERENCES

Dimensions (mm) A x B	Capacity (kg)	Readout (g)	
800 x 800	300	100	
800 x 800	600	100	
1000 x 1000	300	100	
1000 x 1000	600	200	
1250 x 1000	600	200	
1250 x 1000	1500	500	
1250 x 1000	3000	1000	
1250 x 1250	600	200	AVAILABLE IN 2 VERSIONS OF PLATFORM:
1250 x 1250	1500	500	V1. PAINTED
1250 x 1250	3000	1000	V2. COMPLETELY STAINLESS STEEL AISI-304
1500 x 1250	600	200	
1500 x 1250	1500	500	
1500 x 1250	3000	1000	
1500 x 1500	1500	500	
1500 x 1500	3000	1000	
2000 x 1500	1500	500	
2000 x 1500	3000	1000	

ACCESSOIRES: Second ramp

- » **length 500 mm**
- » **10% of incline**
- » **stainless steel**

Dimensions (mm)	
800 x 800	
1000 x 1000	
1250 x 1000	PAINTED AND STAINLESS STEEL VERSIONS
1250 x 1250	
1500 x 1250	
1500 x 1500	
2000 x 1500	

Nota: Second ramp to facilitate entry and exit from both sides of the platforms

Accessories

- » **Column**

- » **ATEX II 3G Ex nR IIC T6 Gc X (for gases)**
- » **ATEX II 3D tc IIIC T85°C Dc IP68 (for dust)**

PTX

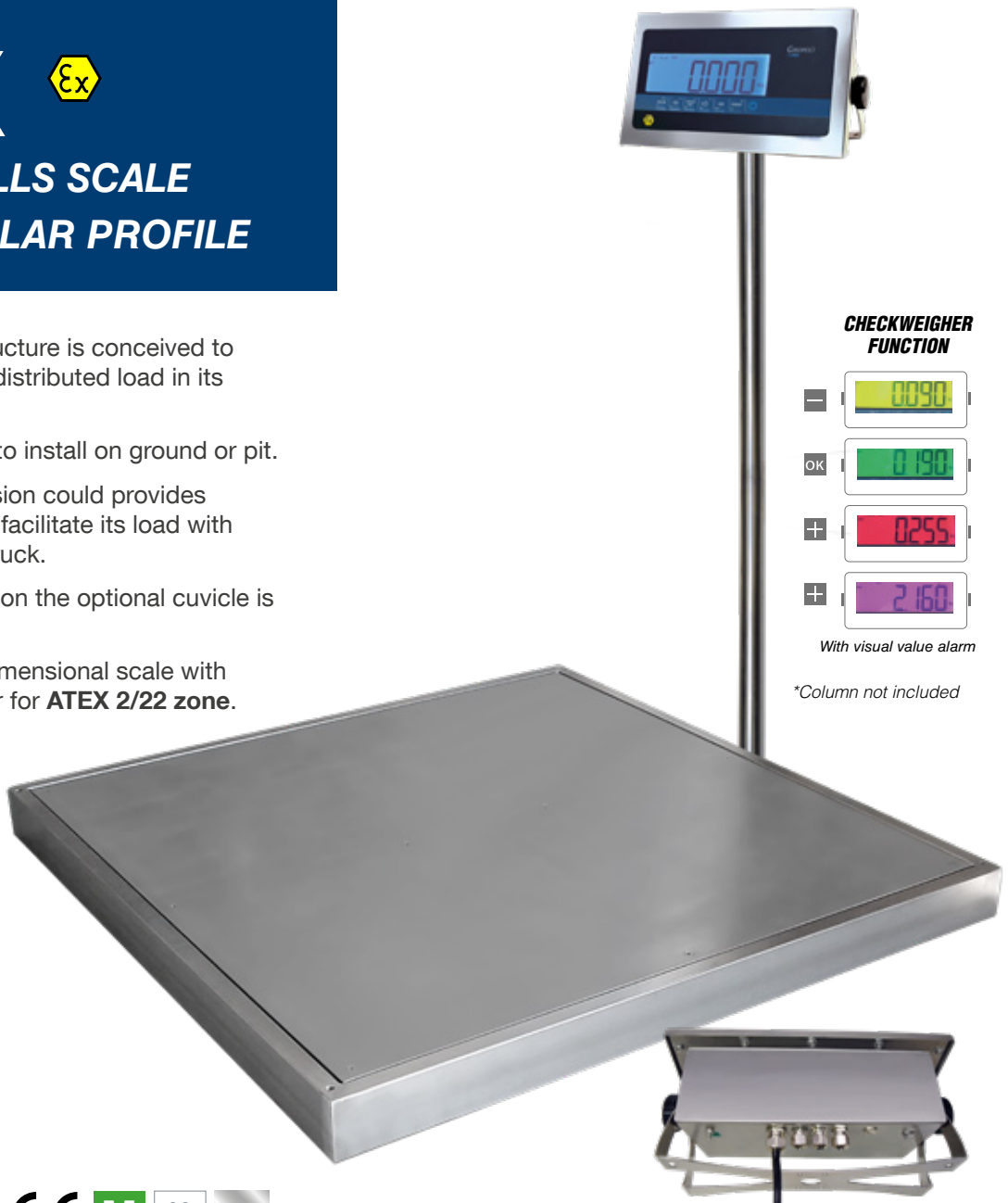
4 LOAD CELLS SCALE WITH TUBULAR PROFILE

Its light tubular structure is conceived to support uniformly distributed load in its surface.

Platform available to install on ground or pit.

- » On ground version could provides optional ramp to facilitate its load with forklift or pallet truck.
- » For pit installation the optional cuvicle is provided

4-load cell multi-dimensional scale with GI400i EX indicator for **ATEX 2/22 zone**.



*Column not included



Cable glands for ATEX zones

INDICATOR FUNCTIONS

- » REPEATER
- » PIECE COUNTING
- » TOTALISATION
- » CHECKWEIGHER
- » NEGATIVE CHECKWEIGHER
- » LIMITS
- » DOSAGE
- » More than 30 protocols
- » System of 2 passwords to lock out functions
- » 8 format of predefined tickets and 1 customizable (associated software)
- » Printing configurable menu: number of copies, cutter on/off, line feed
- » Watchdog system to reset automatically if the indicator gets blocked

PRINTING

- » Programmer of three headings (PC), code and total.

LANGUAGES

- » English, French, Italian, Portuguese and Spanish

METROLOGICAL SPECIFICATIONS

- » III and IIII classes
- » Max. number of verification steps 6000
- » Monorange, multirange or multiinterval (n ≤ 3000, per partial range of weighing)

SOFTWARE*

- » For monitoring, management and control of access to the weighing system



*contact us for more information

PTX

FOR 2/22 ZONES

INDICATOR FEATURES

- » Operation in zones 2/22 via power supply
- » Working temperature -10°C to 40°C
- » Stainless steel housing
- » Reclining wall support
- » Units: kg
- » Other features:
 - » Integrated clock and calendar
 - » Format tickets with configurable weighing code
- » LCD display:
 - » Display with 6 digits of 40mm
 - » Backlight function: On/off/auto
 - » Screen colour indication with checkweigher function
- » 2 RS232 output

LOAD CELL FEATURES

- » Completely made of stainless steel.
- » Hermetically sealed, fully welded.
- » Protection IP 68 | IP 69k
- » OIML approval 3000 divisiones OIML R60 class C
- » ATEX version



Accesorios "U" transport

LOAD CELLS

- » **350i v ATEX:** Stainless steel. | 3000 divisions OIML R60 class C3 | Protection IP68 | IP69k.

JUNCTION BOX

- » ATEX certified hermetic aluminium junction box.

STRUCTURE FEATURES

- » Thickness of the sheet: 5 mm
- » Height 100mm / 120mm (110mm ou 130mm with cuvicle) depending on capacity and dimension.

REFERENCES

Dimensions (mm) A x B	Capacity (kg)	Readout (g)
800 x 800	300	100
800 x 800	600	200
1000 x 1000	300	100
1000 x 1000	600	200
1250 x 1000	600	200
1250 x 1000	1500	500
1250 x 1000	3000	1000
1250 x 1250	600	200
1250 x 1250	1500	500
1250 x 1250	3000	1000
1500 x 1250	600	200
1500 x 1250	1500	500
1500 x 1250	3000	1000
1500 x 1500	1500	500
1500 x 1500	3000	1000
2000 x 1500	1500	500
2000 x 1500	3000	1000

AVAILABLE IN 3 VERSIONS OF PLATFORM

V1. PAINTED

V2. STRUCTURE PAINTED AND STAINLESS STEEL SHEET

V3. COMPLETELY STAINLESS STEEL AISI-304

ACCESSORIES "U" TRANSPORT

Accessory U for the transport of the Platform.

Soldier under the structure.

Dimensions (mm)

800 x 800
1000 x 1000
1250 x 1000
1250 x 1250
1500 x 1250
1500 x 1500
2000 x 1500

PAINTED AND STAINLESS STEEL VERSIONS

Other accessories

Ramps, column, cubicles, frame to pit, galvanized rollers.

- » **ATEX II 3G Ex nR IIC T6 Gc X (for gases)**
- » **ATEX II 3D tc IIIC T85°C Dc IP68 (for dust)**

FREE DOWNLOAD
CONFIGURATION SOFTWARE

FOR GI4XX INDICATORS SERIE
Available at www.giropes-solutions.com



GIscale

Connection to 1 indicator (GI400 or GI410)
Connection with the indicator via COM

CONSULT FOR

MANAGEMENT SOFTWARE

