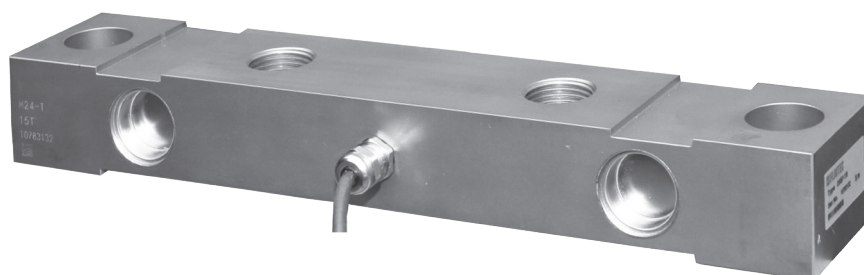


Type DSB7 Load Cell



DSB7 (7.5t)



DSB7 (15t)



DSB7 (25t)



Product Description

The low profile DSB7 double ended shear beam is designed to offer ease of installation in a broad range of industrial applications. To ensure continuous performance the DSB7 family of load cells is constructed from corrosion resistant stainless steel and is laser welded offering complete hermetic sealing.

Application

- High accuracy on-board vehicle weighing systems
- Agricultural machinery applications
- Axle scales
- Silo and vessel weighing

Key Features

- Capacity of 7.5t (16.5 klb), 15t (33 klb) and 25t (55klb)
- Corrosion resistant stainless steel
- Environmental Protection IP68

Packed Weight

- | | | | |
|----------------|------|-----|----|
| ■ Capacity (t) | 7.5 | 15 | 25 |
| ■ Weight (kg) | 1,75 | 4,5 | 15 |

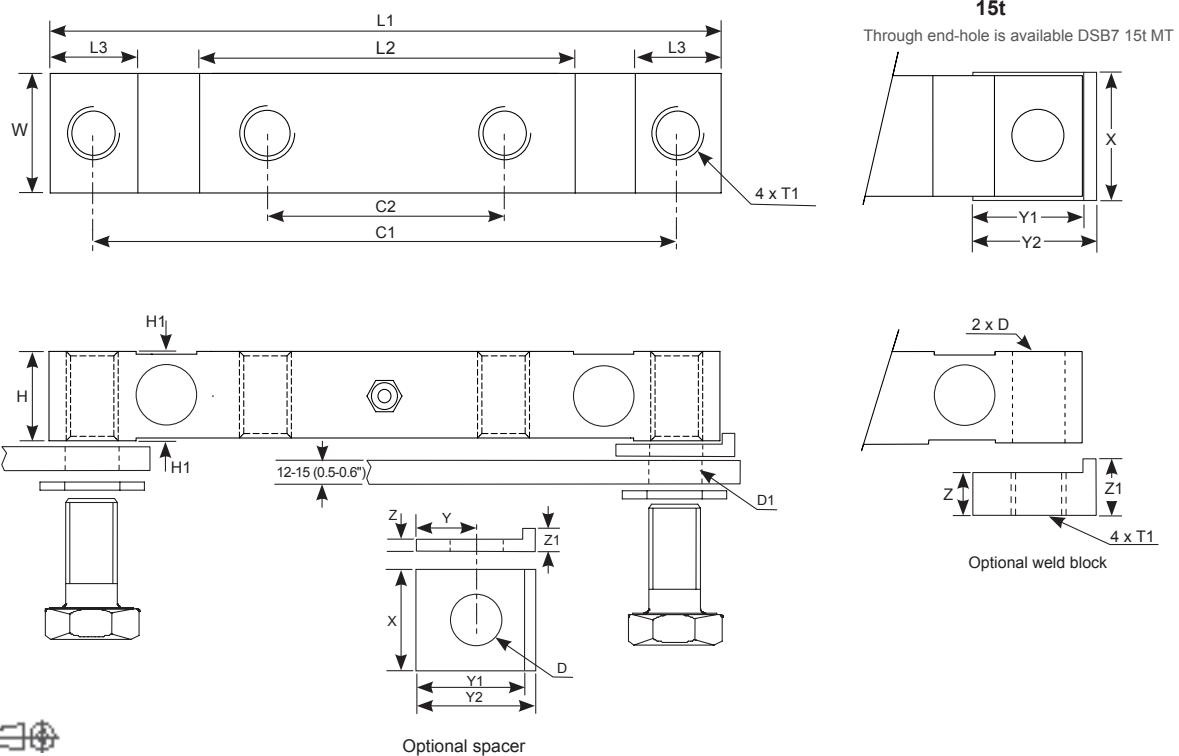
Available Accessories

- Compatible range of application hardware
- Compatible range of electronics

Specifications

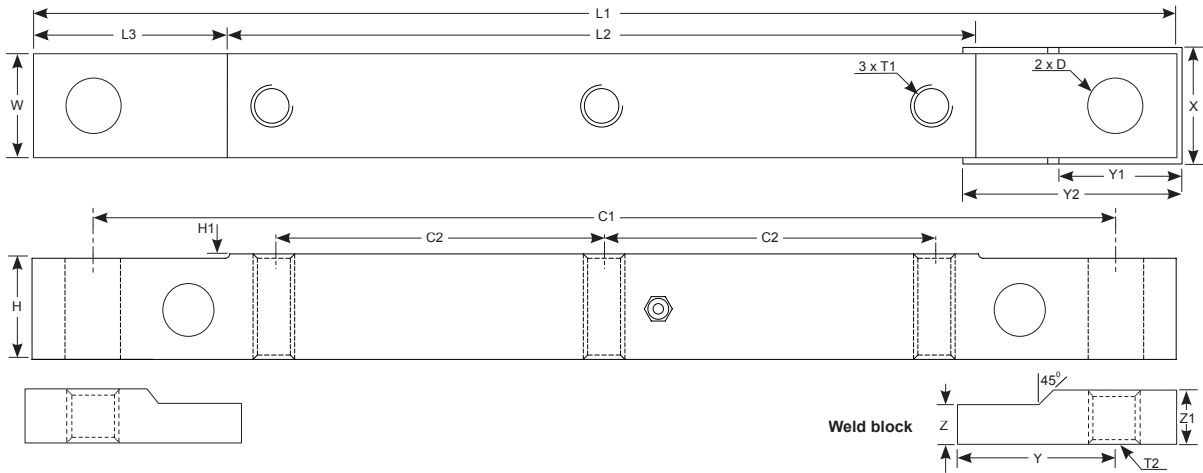
Maximum capacity	(E _{max})	t	7.5	15	25
Accuracy class				GP	
Temperature effect on minimum dead load output	(TC ₀)	%*RO/10°C		± 0.0400	
Temperature effect on sensitivity	(TC _{RO})	%*RO/10°C		± 0.0200	
Combined error		%	± 0.15	± 0.25	± 0.5
Creep error (30 minutes) / DR		%*RO		± 0.0600	
Rated Output	(RO)	mV/V		2 ± 0.1%	
Zero balance		%*RO		+/- 2%	
Excitation voltage		V		5...10	
Input resistance	(R _{LC})	Ω		800 ± 50	
Output resistance	(R _{out})	Ω		700 ± 2	
Insulation resistance (100 V DC)		MΩ		≥ 5000	
Safe load limit	(E _{lim})	%*E _{max}		200	
Ultimate load		%*E _{max}		300	
Safe side load		%*E _{max}		100	
Compensated temperature range		°C		-10...+40	
Operating temperature range		°C		-30...+70	
Load cell material				stainless steel 17-4 PH	
Sealing				complete hermetic sealing	
Protection according EN 60 529				IP68 (up to 2m water depth)	

7.5t & 15t Dimensions (in mm)



Type	L1	L2	L3	C1	C2	H	H1	W	T1	D	D1	X	Y	Y1	Y2	Z	Z1
DSB7-7.5 t	200	96	29	171.5	67.5	30	0.5	40	M16x1.5	-	17-18	42	20	36	42	6	12
DSB7-15t	310	174	40	270	110	40	2.5	54	M24x2.0	25	25-26	56	30	48	54	8	14

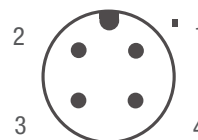
25t Dimensions (in mm)



Type	L1	L2	L3	C1	C2	H	H1	W	T1	T2	D	X	Y	Y1	Y2	Z	Z1
DSB7-25 t	660	432	114	590.5	190.5	58	3.0	58	M24x2.0	M30x2.0	32	62	87	60.25	125	25	32

Wiring

- The load cell is provided with unshielded moulded 4-pin M12 male connector (AWG 24). Cable jacket polyurethane.
- Cable length: 5.0 m, longer or shorter on request
- Cable diameter: 5.5 mm
- Optional: Shielded 4 core cable with wire ends earthed to the load cell body is available on request



Connector pin	
1. brown	+ Excitation
2. white	+ Signal
3. blue	- Excitation
4. Black	- Signal