

6116

IP67 touch screen PC "6116" series, for industrial environments



Industrial PC, with AISI 304 STAINLESS steel body and IP67 protection degree, specific for harsh industrial environments. High-performance Intel electronics.

Working in cooperation with:

P.R.S. TORFBUD

UL.KOPERNIKA 6 - 41500 - CHORZOW - POLAND
Tel. 0048-322413522 Fax. 0048-322413522
torfbud@wagielektroniczne.com.pl

The best solution
for advanced industrial
applications

TECHNICAL FEATURES

- 64bit Intel processor, up to 1.92GHz
- GPU Intel GEN 8 HD 400 graphic processor
- Pre-installed Windows 10 operating system
- Resistive touch screen display, suitable for use with gloves and in presence of water/condensation.
- Dimension 10.1", resolution 1024x600,
- RAM 2GB DDR3L
- Data storage 32GB eMMC fast type
- Integrated RTC (for date/time, bios, etc.)
- AISI 304 STAINLESS steel body, with adjustable inclination
- Fitted with ergonomic bracket, for bench use or wall fixing
- Industrial communication ports, with IP67 protection
- Fanless technology
- IP67 STAINLESS steel valve, for humidity and pressure regulation inside the case
- IP67 overall protection degree
- Working temperature: -10/60°C
- Dimensions (l x h x w): 385x230x141 mm
- Power supply 110/240Vac

AVAILABLE INPUTS/OUTPUTS

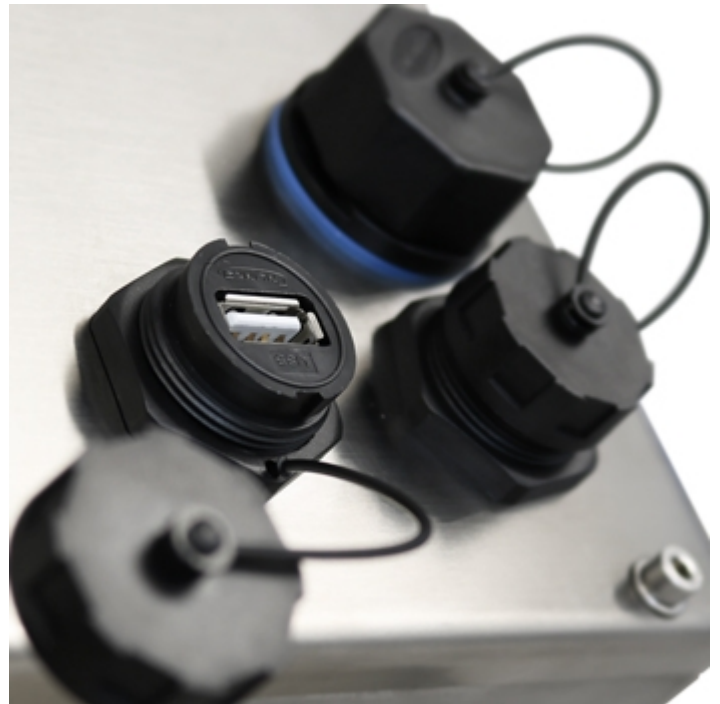
- 2 USB 2.0 panel ports
- 1 USB 2.0 available inside
- 1 ETHERNET panel port (1x Gbit)
- 1 USB3 3.0 OTG available inside

DETAIL 1



STAINLESS steel inclination adjustment system

DETAIL 2



Waterproof communication ports

DETAIL 3



Well-finished in every detail, for harsh industrial environments

DETAIL 4



Rear panel configured for extra outputs



www.diniargeo.com

“YOUR WORLDWIDE PARTNER FOR WEIGHING,”

DINI AR GEO
FRANCE sarl
Nogent-sur-Marne

DINI AR GEO
GMBH
Sinsheim - Germany

DINI AR GEO
UK Ltd
Taunton - United Kingdom

DINI AR GEO WEIGHING
INSTRUMENTS Ltd
Shanghai - China

DINI AR GEO
WEIGHBRIDGES
Calto (RO) - Italy



HEAD OFFICE
Via Della Fisica, 20
41042 Spezzano di Fiorano Modena - Italy



P.R.S. TORFBUD

UL.KOPERNIKA 6 - 41500 - CHORZOW - POLAND

Tel. 0048-322413522 Fax. 0048-322413522

torfbud@wagielektroniczne.com.pl

SALES AND TECHNICAL ASSISTANCE SERVICE