

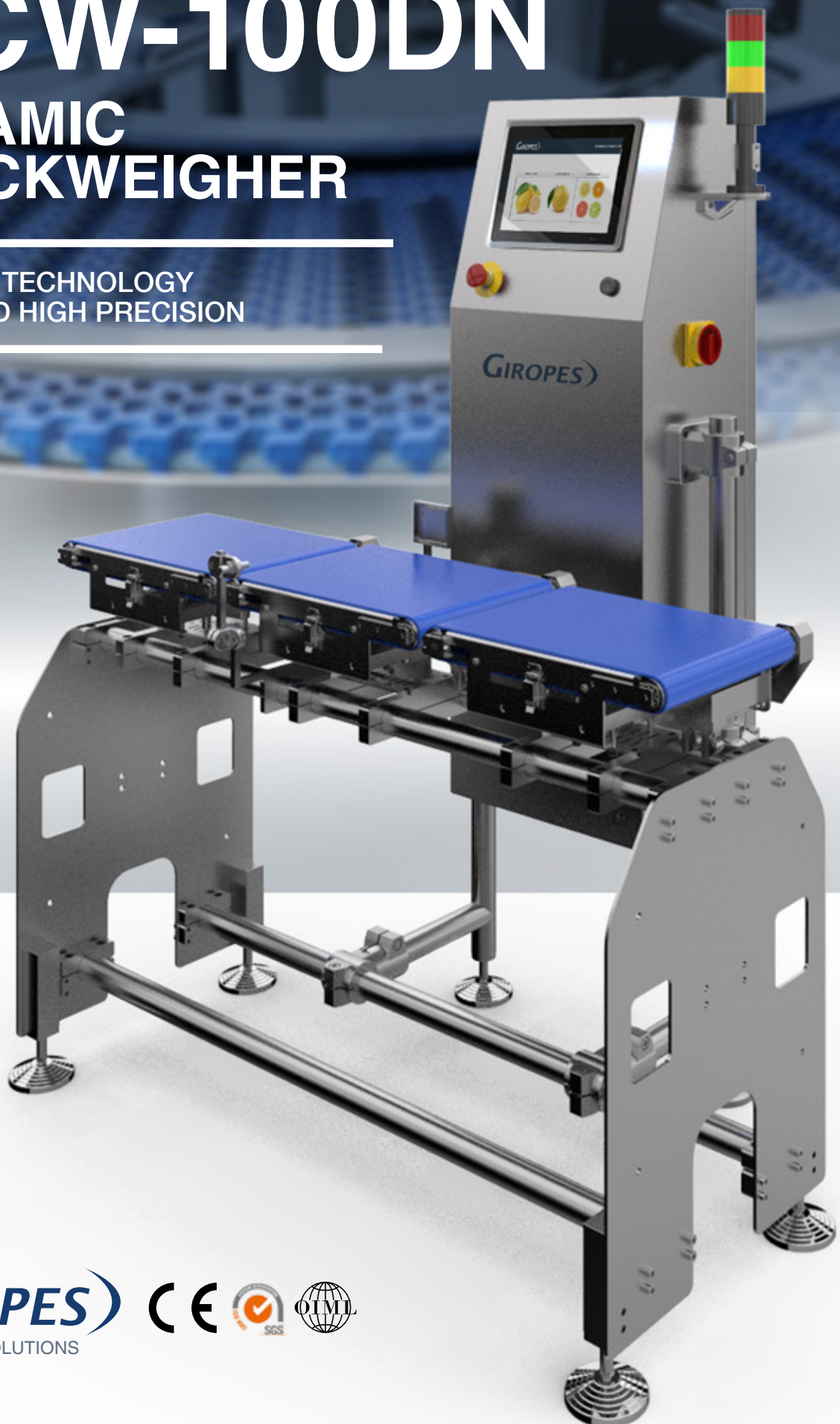
# GCW-100DN

## DYNAMIC CHECKWEIGHER

---

WEIGHING TECHNOLOGY  
SPEED AND HIGH PRECISION

---



**GIROPES**  
WEIGHING SOLUTIONS





## GCW-100DN CHECKWEIGHER

# GCW100DN

## Guide to aspects to be considered

Integrating a checkweigher into your production line can revolutionize your operations. However, it is crucial to evaluate the specific needs of your business before making an investment to ensure that you choose the ideal weighing solution.

### HOW TO CHOOSE THE SUPPLIER

#### Experience and adaptability

The experience and the human team is key to choose a partner in the weighing sector.

#### Own development

Investment in innovation also leads to the development of products and services that are efficient and adaptable to specific customer needs.

#### Integral support and after-sales service

We have preventive maintenance programs that guarantee the optimal operation of the equipment, minimizing downtime and extending the useful life of the checkweighers.

### DEFINE THE SPECIFIC NEEDS

#### Type of product to be weighed

The type of product will determine the design, capacity and accessories of your weighing equipment.

#### Production environment

Environmental conditions: Consider factors such as temperature, humidity and cleanliness.

Space Available: Evaluate the physical space available for the checkweigher installation.

#### Accuracy

In checkweighing, accuracy is measured by the proximity of the product to the preset target weight. Since they are used in various industries with strict regulations, accuracy is essential.

#### How the product arrives

Automatic or manual feeding. It will affect the packet per minute requirements, as well as the option to the tape rejection system.





#innovation

# GCW100DN

## HIGHER EFFICIENCY AND PRODUCTIVITY

### Fast measurement

It allows weighing products in motion without stopping the production line, which increases the speed and efficiency of the process.

### Automation

Integrated into automated systems, it can operate continuously and without manual intervention, reducing waiting times and increasing productivity.

## ACCURACY AND CONSISTENCY

### Accurate weighing

It provides accurate and consistent measurements, which is crucial to comply with regulations and quality standards.

### Deviation detection

Helps identify out-of-specification products, ensuring that only products that meet established weight criteria are shipped.

## QUALITY CONTROL SYSTEMS AND LOSS REDUCTION:

### Elimination of defective products:

Automatically identifies and separates products with incorrect weight, reducing the risk of sending defective products to the customer.

### Waste minimization

Helps to avoid overfilling or underfilling, optimizing the use of materials and reducing waste.

## VALUE ADDED AND ROI

### Operational efficiency

Designed to improve operational efficiency, reducing production times and minimizing material waste, resulting in a significant return on investment

### Quality control systems improvement

The high accuracy and reliability of our checkweighers ensure that each product meets quality specifications, increasing customer satisfaction and strengthening your reputation in the marketplace.



# SOFTWARE #intuitive

## CONFIGURATION OF THE WEIGHING SOFTWARE

**Products:** Configure the different products to capture with the following parameters: minimum-maximum and target weight, item code, item name and associated image.

**Option for ERP integration:** Ensure that data is captured in a format compatible with your ERP.

### Motor speed configuration:

It allows configuring the working speeds of the motors of the different carriages.

### RFID ACTIVATION

**By means of RFID cards:** Identifying or obtaining readings of operators and/or packages with RFID tags.

### EXTERNAL BEACON

**Activation of external beacon:** For audible or visual monitoring of the working status.

**Languages:** Giropes offers the customization of the different languages: Spanish, French, Italian, Portuguese and German.

**List of users:** Possibility to add, modify, delete a list of operators with access to the system.

**Design and customization of reports and labels:** Menu to customize the different label formats that may exist in the market.

## REAL TIME DATA TRANSFER

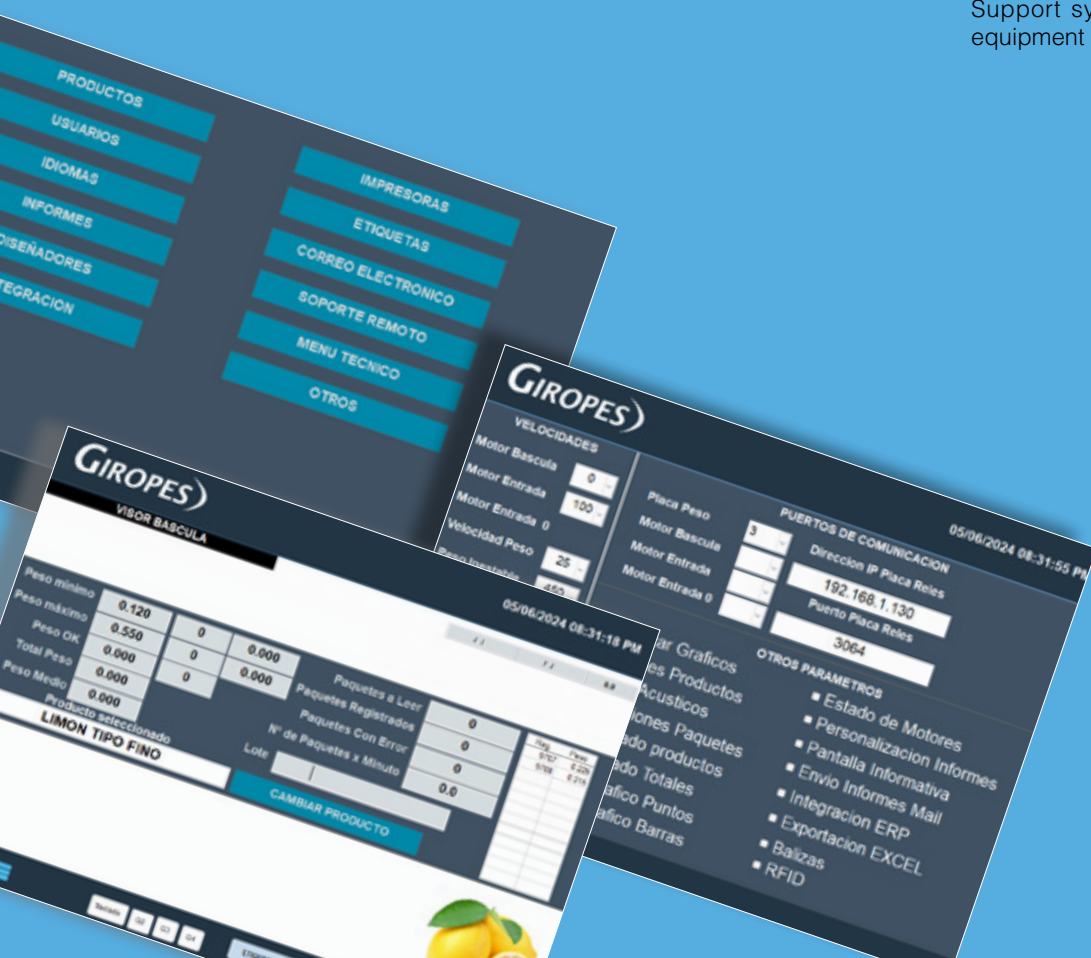
**Data synchronization:** Configure it to transfer weighing data in real time to your ERP, allowing for instant updates to records.

**Reports:** Weight record grouped by lots and product, statistical control in detail or in summary format.

**Export to Microsoft Excel®:** Facilitate data logging and analysis with direct exports to Excel.

## REAL-TIME WEB MONITORING 4.0

**Remote support:** Support system and remote equipment control.



UNIFIED DATABASE  
PLAN  
PROGRAM  
CONTROL

**GIROPES**



**Screen**  
Intuitive interface  
Touch screen

**Inlet trolley  
(to choose work direction)**  
Optional: aligner, metal detector

**Product output**  
Discard mechanisms  
packaging and pack-  
ing line

» **Configure the working speed of the different motors:**

The functionality of the checkweigher is achieved from the different communication ports.

Allows you to configure the speed of the input carriage, scale, weigh belt, output, as well as other motors that can be added.

» **Capture and Real Time Monitoring:**

Always stay informed with accurate and up-to-date data.

Detailed and accessible reports from anywhere, anytime.

**OPTIONAL  
INTEGRATION**

# Optional

## ***Additional features to be considered***

Integrating a checkweigher into your production line can revolutionize your operations. It is crucial to evaluate the specific needs of your business before making this investment, ensuring that you choose the ideal weighing solution and optional components that will efficiently optimize your process.



### **LABELING SYSTEM**

Crucial for product identification, traceability and compliance with regulations and market requirements. Prints necessary information on labels, such as barcodes, expiration dates, lot numbers, logos, etc. Continuously supplying labels to the application system.

They guarantee precision in label placement.

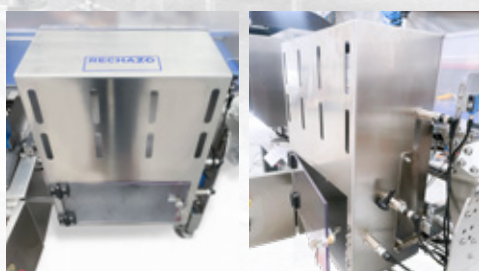


### **METAL DETECTOR**

The metal detectors use powerful digital signal processing technology and have high levels of sensitivity to detect the smallest ferrous, non-ferrous and stainless steel contaminants.

Adjust to any application with custom conveyor systems and rejection options that we manufacture to your specifications.





### REJECTION BOX

Solid and robust structure with a (clean design), with polycarbonate doors to access to the interior. Integrated into the machine structure.



### EJECTION SYSTEM

Implementing an effective ejection system contributes significantly to process efficiency and quality, reducing costs associated with defective products.

Rejection system (optional):

- » Compressed air
- » System with pneumatic piston
- » Shovel system



**DESIGN  
360**





# GCW-100DN checkweigher dynamic, intuitive interface and adaptive integration into production lines

## CUSTOMIZED SOLUTIONS

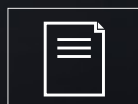
Dedicated team for the study and analysis of each project to provide the best solution. Total support from the request to the installation and commissioning.

## PREVENTIVE MAINTENANCE

Minimize downtime and maximize your production efficiency with our expert technical support. We keep our customers up to date with the latest technological developments.



**CONFIGURATION**  
PRODUCT



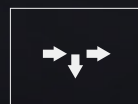
**STATISTICS:**  
REPORTS



**ERP**  
INTEGRATION



**METAL**  
DETECTION



**EXPULSION**  
AIR OR PISTON

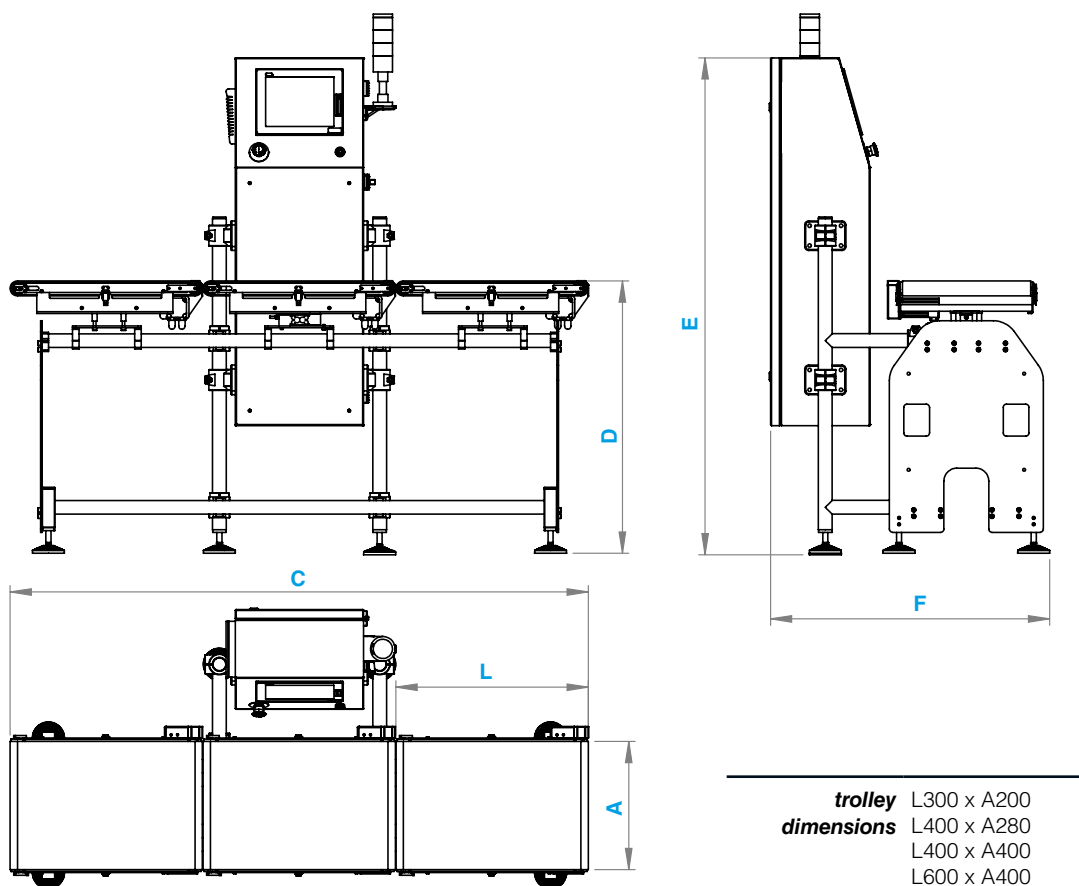


**LABELING**  
IDENTIFICATION

## Dimensions

Models according to cart	Capacities	A	L	C	D	E	F
L300 x A200	1.5 kg /3kg	200	300	1211	850	1550	871
L400 x A280	3 kg / 6 kg / 15 kg	280	400	1214	850	1550	871
L400 x A400	6 kg / 15 kg / 30 kg	400	400	1214	850	1550	871
L600 x A400	6 kg / 15 kg / 30 kg	400	600	1804	850	1550	871

(dimensions in mm) 850–950 (adjustable legs +/-100)



### Features Technical

**Feeding** Electric: 230V 50Hz.  
Air: max. 150 l/min (at 6-8 bar) (when incorporating rejection system).

**Nominal power** 800 W.

**Material of the scale frame** AISI 304L stainless steel and anodized/painted aluminum.

**Dimensions and weight** Trolley L300 x A200: 60.50 kg.  
Trolley L400 x A280: 63.73 kg.  
Trolley L400 x A400: 68.85 kg.  
Trolley L600 x A400: 78.67 kg.

**Communications to PC** Ethernet.  
RS232.  
4 USB (3.0).

**PC software** Direct connection to the computer from any device with access to the same network as the GCW-100DN through the Google Chrome browser.  
Data export to Excel or CSV.

# Standard specifications

## Characteristics of the weighing system

- Type of weighing** Dynamic or static.
- Noteworthy functions**
- » High performance weighing: up to 70 ppm. Discrimination for weight verification.
  - » Productivity control.
  - » Effective filling control "E" .

## Product design

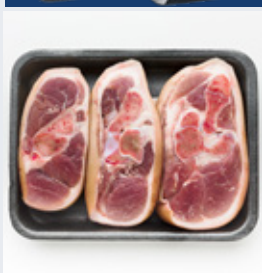
- Protection Rating** IP65 (standard).
- Electrical cabinet** Vertical electrical cabinet with integrated touchscreen display.
- Screen** 10.4" capacitive touch LCD. Resolution 1024x768 px. IP65 sealing.
- Guiders** AISI 304L stainless steel, anodized aluminum and APM.
- Conveyor belt:** Standard with FDA regulatory approval.
- » Standard.
  - » High speed: super adherent.
  - » Sliders: for ejection zones.
- Optional reject system** Air blowing "Air-jet"\*.  
Pneumatic piston to 90°\*.
- Number of rejectors and function:**
- » 1 rejector: weight out of range.
  - » 2 rejectors: weight above and weight below range.
  - » Unregistered product rejector.
  - » Metal product rejector (connection to metal detector required).
- \* All rejection systems (pneumatic piston, air blowing, etc.) depend on the type of product/packaging, required speed, collection system, etc.*
- Labeling system** Optional (consult us).
- Entries** Product presence sensor.  
Line commissioning.  
Line shutdown.
- Exits** Start up and stoppage the conveyor.  
Sensor light/buzzer.  
Auxiliary output for equipment monitoring.  
Ejector.

## Ergonomic features and work

- Reach according to trolley dimensions** 1.5 kg / 0.5 g with trolley of L300 x A280 mm.  
3 kg / 1 g with trolley of L300 x A280 mm and L400 x A280 mm.  
6 kg / 2 g with trolleys of L400 x A280 mm, L400 x A400 mm and L600 x A400 mm.  
15 kg / 5 g with trolleys of L400 x A280 mm, L400 x A400 mm y L600 x A400 mm.  
30 kg / 10g with trolleys of L600 x A400 mm y L400 x A400 mm.
- Cadence (ppm)** Max. 70.
- Motor** Servo Motor.
- Transport management** From right to left or from left to right (specify when ordering).
- Working height (mm)** 850mm - 950mm (adjustable legs, minimum height 600 mm +/- 50).
- Operating temperature °C** 0°-40°C.
- Protection Rating** IP65.



# GCW-100DN



## GCW-100DN checkweigher

Reference	Capacity (kg)	Precision (g)	#Code
GCW-100DN - 300x200	1.5	0.5	-
GCW-100DN - 300x200	3	1	-
GCW-100DN - 400x280	1.5	0.5	-
GCW-100DN - 400x280	3	1	-
GCW-100DN - 400x280	15	5	-
GCW-100DN - 400x400	6	2	-
GCW-100DN - 400x400	15	5	-
GCW-100DN - 400x400	30	10	-
GCW-100DN - 600x400	6	2	-
GCW-100DN - 600x400	15	5	-
GCW-100DN - 600x400	30	10	-

## Other settings

Description	#Code
Horizontal barrier detector	-
Gantry detector (horizontal + vertical) for low product height (e.g.: envelopes)	-
AISI 304 stainless steel inlet guides	-
Entry guides with polymeric materials for high humidity environments	-
Rejection system: Compressed air	-
Rejection system: Pneumatic piston	-
Rejection system: Shovel system	-
Rejection box	-
Labeling system	-
Metal detector	-