

## Global Usage

### Fully Approved for Accuracy and Safety



#### Floor Scales

Use the 0745A load cell in platform and floor scales. Due to the hermetic welded design the 0745A is ideal for harsh environments in process and food applications. The full set of approvals provides maximum applicability and safety in these applications.



#### Tank Weighing

The capacity range from 110kg to 4.4t allows the weighing of tanks and silos. The stainless steel design, hermetic sealing and IP68 protection provides the best reliability in tank and hopper weighing applications in harsh environments in process and food applications.



#### MultiMount™ Weigh Module

The optional METTLER TOLEDO MultiMount™ weigh module allows one to convert an existing system into a precise weighing system. It is ideal for applications such as tank scales, belt scales and conveyor scales. Available in zinc plated steel or stainless steel.



#### Hermetically Sealed

0745A load cells are made from stainless steel and hermetically sealed by laser welding. This protects the load cell from damp for the best stability and measuring performance.



#### 0745A Beam Load Cell Fully Approved

The 0745A is approved for use in various applications in Europe, Asia, America and almost everywhere else in the world. If an approval is required, the 0745A probably already complies. Even if needed for hazardous areas later, the 0745A is already prepared.

0745A beam load cell features:

- OIML C3/C6 and NTEP III M 5000/10000 approvals
- ATEX/IECEX Zone1/2 and 21/22 approvals
- FM Class I,II,III Div 1&2 approvals for USA & Canada
- Stainless steel
- Hermetically sealed design
- IP68, IP69K protection class

# 0745A Load Cell Specifications

| Parameter                                 | Unit of measure            | Specification  |   |               |   |              |                      |  |
|---|----------------------------|--|---|---------------|---|--------------|----------------------|--|
| Model No.                                 |                            | 0745A  |   |               |   |              |                      |  |
| Rated capacity (R.C.)                     | kg (lb, nominal)           | 110 (250)  | 220 (500)   | 550 (1250)    | 1100 (2500)                                   | 2200 (5000)  | 4400 (10000)         |  |
| Rated output                              | mV/V @R.C.-kg              | 0.970 ± 0.2%   |   |               | 1.940 ± 0.1%                                  |              |                      |  |
|   | mV/V @R.C.-lb              | 1.000 ± 0.2%   |   |               | 2.000 ± 0.1%                                  |              |                      |  |
| Zero load output                          | %R.C.                      | ≤ 2  |   |               | ≤ 1   |              |                      |  |
| Combined error <sup>1)2)</sup>            | %R.C.                      | ≤ 0.03   |   |               | C3: ≤ 0.018 / C6: ≤ 0.012                     |              |                      |  |
| Repeatability error                       | %A.L. <sup>3)</sup>        | ≤ 0.01   |   |               | C3: ≤ 0.01 / C6: ≤ 0.005                      |              |                      |  |
| Creep, 30 minute                          | %A.L.                      | ≤ 0.03   |   |               | C3: ≤ 0.017 / C6: ≤ 0.008                     |              |                      |  |
| Min. dead load output return (DR), 30 min | %A.L.                      | ≤ 0.03   |   |               | C3: ≤ 0.017 / C6: ≤ 0.008                     |              |                      |  |
| Temperature effect on                     | Min. dead load output      | %R.C./°C (./°F) ≤ 0.0027 (0.0015)  |   |               | C3: ≤ 0.0013 (0.0007) / C6: ≤ 0.0013 (0.0007) |              |                      |  |
|   | Sensitivity <sup>2)</sup>  | %A.L./°C (./°F) ≤ 0.0014 (0.0008)  |   |               | C3: ≤ 0.001 (0.0006) / C6: ≤ 0.0005 (0.0003)  |              |                      |  |
| Temperature range                         | Compensated                | -10 to +40 (+14 to +104)   |   |               |   |              |                      |  |
|   | Operating                  | -40 to +65 (-40 to +150)   |   |               |   |              |                      |  |
|   | Safe storage               | -40 to +80 (-40 to +176)   |   |               |   |              |                      |  |
| OIML / European approval <sup>4)</sup>    | Number, OIML / Europe      | R60/2000-NL1-09.07 / NMi TC2154  |   |               |   |              |                      |  |
|   | Class                      | C3 / C6  |   |               |   |              |                      |  |
|   | nmax                       | 3000 / 6000  |   |               |   |              |                      |  |
|   | Y                          | 11000  |   |               |   |              |                      |  |
|   | PLC                        | 0.7  |   |               |   |              |                      |  |
|   | Humidity symbol            | None   |   |               |   |              |                      |  |
|   | Min. dead load             | kg (lb)  | 0 (0)   |               |   |              |                      |  |
|   | Z                          |  | 3000 / 6000   |               |   |              |                      |  |
|   | Barometric pressure effect | Vmin/kPa   | None  |               |   |              |                      |  |
|   | Number                     |  | 92-108  |               |   |              |                      |  |
| NTEP approval <sup>4)</sup>               | Class                      | III M / III M  |   |               |   |              |                      |  |
|   | nmax                       | 5000 / 10000   |   |               |   |              |                      |  |
|   | Vmin                       | kg (lb)  | 0.022 (0.05)  | 0.056 (0.125) | 0.114 (0.25)                                  | 0.227 (0.50) | 0.454 (1.0)          |  |
|   | Min. dead load             | kg (lb)  | 0 (0)   |               |   |              |                      |  |
|   | Number                     |  | KEMA 03ATEX1069 / KEMA 03ATEX1070   |               |   |              |                      |  |
| ATEX approval <sup>4)</sup>               | Rating                     | II 2 G Ex ia IIC T4 Gb / II 2 D Ex ia IIIC T100 °C Db                                  |   |               |   |              |                      |  |
|   | Entity parameters          | II 3 G Ex ic IIC T4 Gc / II 3 G Ex nA IIC T4 Gc / II 3 D Ex tc IIIC T100 °C Dc         |   |               |   |              |                      |  |
| IECEX approval <sup>4)</sup>              | Number                     | UI/Un = 25V, li = 600mA, Pi = 1.25W, Ci = 5nF, Li = 30µH                               |   |               |   |              |                      |  |
|   | Rating                     | IECEX DEK 15.0017  |   |               |   |              |                      |  |
| Factory Mutual Approval <sup>4)</sup>     | Number, USA / Canada       | Ex ia IIC T4 Gb / Ex ia IIIC T100 °C Db  |   |               |   |              |                      |  |
|   | Rating, USA                | Ex ic IIC T4 Gc / Ex nA IIC T4 Gc / Ex tc IIIC T100 °C Dc                              |   |               |   |              |                      |  |
| Factory Mutual Approval <sup>4)</sup>     | Entity parameters US       | UI = 25V, li = 600mA, Pi = 1.25W, Ci = 5nF, Li = 30µH / Un = 25V, Ci = 5 nF            |   |               |   |              |                      |  |
|   | Entity parameters Canada   | FM18US0025 / FM18CA0032  |   |               |   |              |                      |  |
|   | System drawing No, USA     | IS / I, II, III / 1 / ABCDEFG / T4 Entity  |   |               |   |              |                      |  |
|   | System drawing No, Canada  | NI / I / 2 / ABCD / T6 NIFW; S / II, III / 2 / FG / T6                                 |   |               |   |              |                      |  |
|   | Entity parameters US       | IS / I, II, III / 1 / ABCDEFG / T4 Entity  |   |               |   |              |                      |  |
|   | Entity parameters Canada   | NI / I / 2 / ABCD / T6 NIFW; DIP / II, III / 2 / FG / T6                               |   |               |   |              |                      |  |
|   | Entity parameters US       | Vmax=25V, Imax=600mA, Pi=1.25W, Ci=0, Li=0; NIFW: Vmax=25V, Imax=600mA, Ci= 0, Li=29µH |   |               |   |              |                      |  |
|   | Entity parameters Canada   | Vmax=25V, Imax=600mA, Pi=1.25W, Ci=0, Li=0; NIFW: Vmax=25V, Imax=600mA, Ci= 0, Li=29µH |   |               |   |              |                      |  |
| Excitation voltage                        | Recommended                | 30062229   |   |               |   |              |                      |  |
|   | Max.                       | V AC/DC  | C3: 5 ~ 15 / C6: 5 ~ 10   |               |   |              |                      |  |
| Terminal resistance                       | Excitation                 | Ω  | 15  |               |   |              |                      |  |
|   | Output                     | Ω  | 384 ± 10  |               |   |              |                      |  |
| Insulation resistance @50VDC              | MΩ                         | 350 ± 2  |   |               |   |              |                      |  |
| Breakdown voltage                         | V AC                       | > 5000   |   |               |   |              |                      |  |
| Material                                  | Spring element             | Stainless steel  |   |               |   |              |                      |  |
|   | Enclosure                  | 304 Stainless steel  |   |               |   |              |                      |  |
|   | Cable entry fitting        | 304 Stainless steel  |   |               |   |              |                      |  |
|   | Cable                      | Polyurethane (PU) and FEP  |   |               |   |              |                      |  |
| Protection                                | Type                       | Welded   |   |               |   |              |                      |  |
|   | IP rating                  | IP68, IP69K  |   |               |   |              |                      |  |
|   | NEMA rating                | NEMA 6/6P  |   |               |   |              |                      |  |
| Load limit                                | Safe                       | %R.C.  | 150   |               |   |              |                      |  |
|   | Ultimate                   | %R.C.  | 300   |               |   |              |                      |  |
| Safe side load <sup>5)</sup>              | %R.C.                      | 100  |   |               |   |              |                      |  |
| Safe dynamic load                         | %R.C.                      | 70   |   |               |   |              |                      |  |
| Fatigue life                              | cycles @R.C.               | >1,000,000   |   |               |   |              |                      |  |
| Direction of loading                      |                            | Beam   |   |               |   |              |                      |  |
| Deflection @ R.C., nominal                | mm (in)                    | 0.11 (0.004)   | 0.21 (0.008)  | 0.23 (0.009)  | 0.31 (0.012)                                  | 0.50 (0.02)  | 0.82 (0.032)         |  |
| Overload protection                       |                            | Yes  |   |               |   | No           |                      |  |
| Weight, nominal                           | kg (lb)                    | 0.9 (2)  |   |               |   | 1.3 (2.9)    | 2 (4.4)              |  |
| Cable length                              | Length                     | m (ft)   | PU: 2 (6.6), 3 (9.8), 5 (16.4), 10 (32.8) / FEP: 3 (9.8), 5 (16.4), 10 (32.8) |               |   |              |                      |  |
|   | Diameter                   | mm (in)  | PU: 5.2 (0.2) / FEP: 5.3 (0.21)   |               |   |              |                      |  |
|   | Grade                      |  | 10.9 (Grade 8)  |               |   |              |                      |  |
| Mounting screw                            | Size/thread                | mm (in)  | M12 (1/2-13 UNC)  |               |   |              | M18x1.5 (3/4-10 UNC) |  |
|   | Torque, nominal            | N.m (ft-lb)  | 98 (70)   |               |   |              | 270 (200)            |  |
| Drawing No.                               | Dimensions                 | 30214325   |   |               |   |              |                      |  |
|   | To-Scale                   | 30214326   |   |               |   |              |                      |  |

<sup>1)</sup> Error due to the combined effect of non-linearity and hysteresis

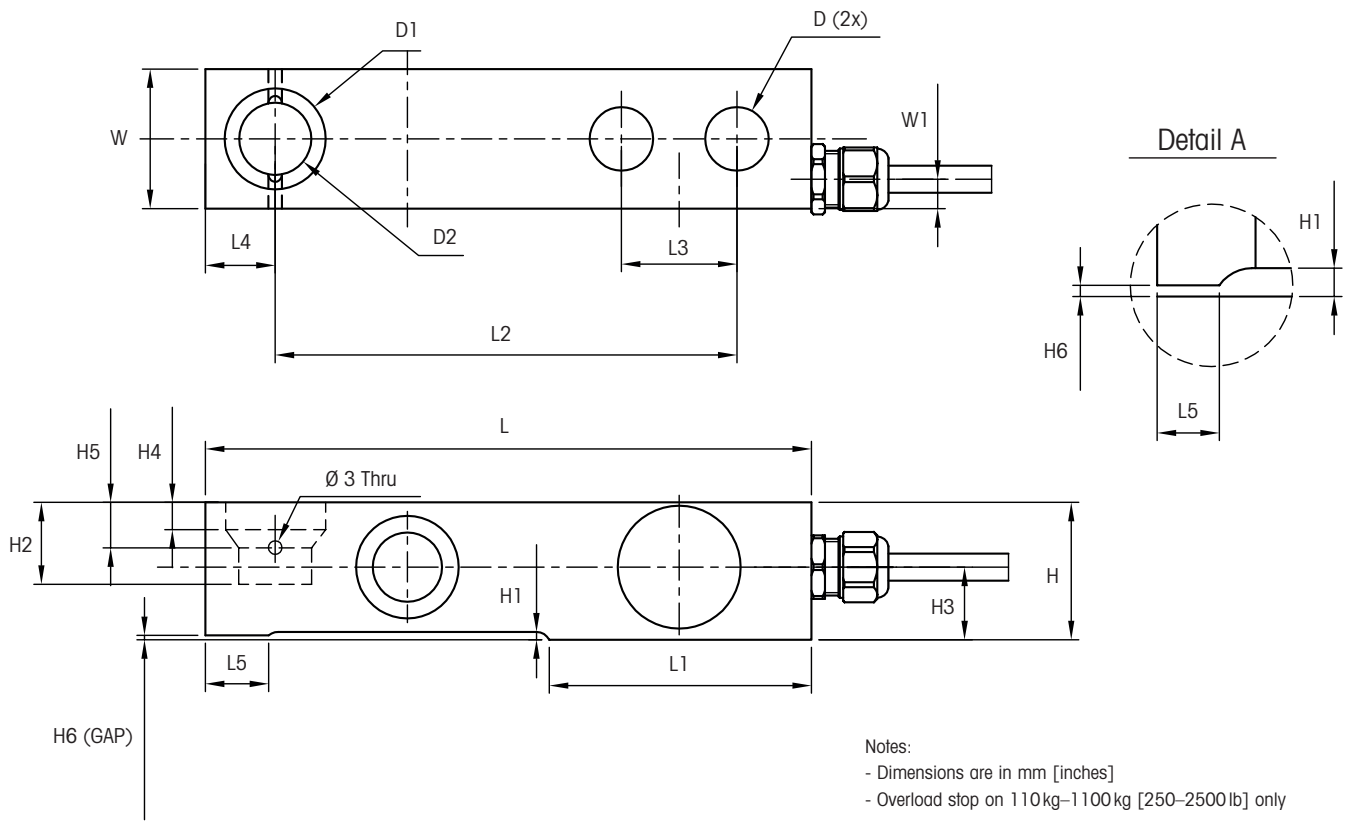
<sup>2)</sup> Typical values only. The sum of errors due to combined error and temperature effect on sensitivity comply with the requirements of OIML R60 and NIST HB44.

<sup>3)</sup> A.L. = Applied Load

<sup>4)</sup> See certificate for complete information.

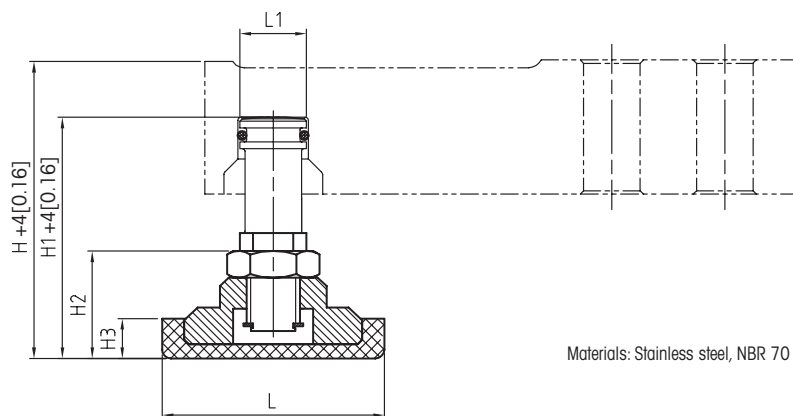
<sup>5)</sup> Protect mounting screws from shear.

# 0745A Load Cell Dimensional Drawings mm [in]



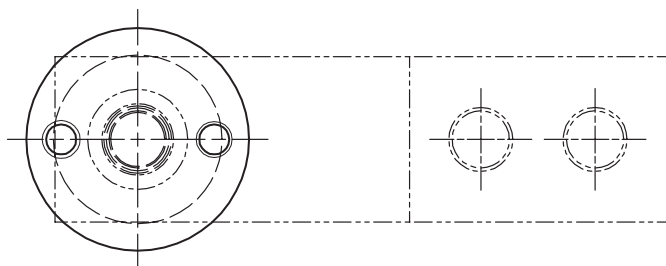
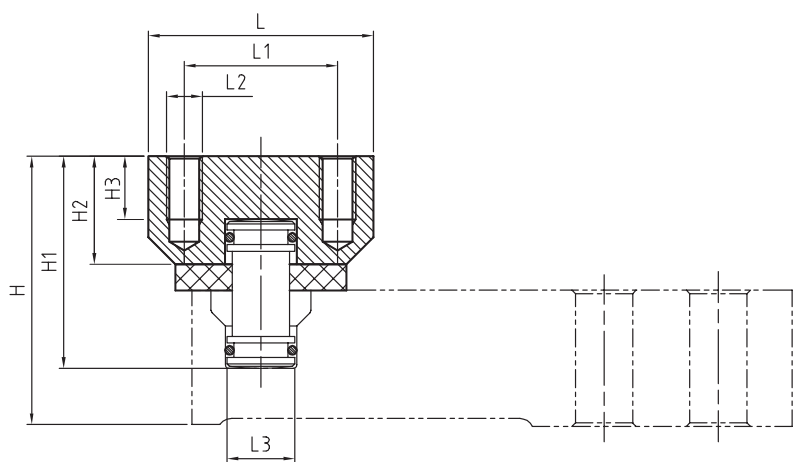
| Model       | Capacity      | Dimensions and locations |        |        |        |        |        |        |        |        |         |        |        |        |        |        |        |        |        |
|-------------|---------------|--------------------------|--------|--------|--------|--------|--------|--------|--------|--------|---------|--------|--------|--------|--------|--------|--------|--------|--------|
|             |               | D (2x)                   | D1     | D2     | H      | H1     | H2     | H3     | H4     | H5     | H6      | L      | L1     | L2     | L3     | L4     | L5     | W      | W1     |
| 0745A       | 110-550 kg    | 13.0                     | 22.2   | 15.9   | 30.2   | 1.8    | 17.3   | 16     | 4.8    | 7.9    | 0.38    | 133.4  | 57.7   | 101.6  | 25.4   | 15.4   | 6.4    | 30.7   | 6.48   |
|             | [250-1250 lb] | [0.51]                   | [0.88] | [0.62] | [1.19] | [0.07] | [0.68] | [0.63] | [0.19] | [0.31] | [0.015] | [5.25] | [2.27] | [4.00] | [1.00] | [0.61] | [0.25] | [1.21] | [0.26] |
|             | 1100 kg       | 13.0                     | 22.2   | 15.9   | 30.2   | 1.8    | 17.3   | 16     | 4.8    | 7.9    | 0.51    | 133.4  | 57.7   | 101.6  | 25.4   | 15.4   | 6.4    | 30.7   | 6.48   |
|             | [2500 lb]     | [0.51]                   | [0.88] | [0.62] | [1.19] | [0.07] | [0.68] | [0.63] | [0.19] | [0.31] | [0.02]  | [5.25] | [2.27] | [4.00] | [1.00] | [0.61] | [0.25] | [1.21] | [0.26] |
|             | 2200 kg       | 13.0                     | 22.2   | 15.9   | 36.6   | 4      | 22.9   | 20.3   | 9.5    | 12.7   | 4       | 136.6  | 57.9   | 101.6  | 25.4   | 18.4   |        | 36.7   | 6.48   |
|             | [5000 lb]     | [0.51]                   | [0.88] | [0.62] | [1.44] | [0.16] | [0.90] | [0.80] | [0.37] | [0.50] | [0.16]  | [5.38] | [2.28] | [4.00] | [1.00] | [0.72] |        | [1.44] | [0.26] |
| 4400 kg     | 19.3          | 34.9                     | 22.2   | 42.9   | 2.3    | 20     | 29.3   | 11     | 17.4   | 2.3    | 171.5   | 73.8   | 133.3  | 38.1   | 21.5   |        | 42.9   | 6.48   |        |
| [10 000 lb] | [0.76]        | [1.38]                   | [0.88] | [1.69] | [0.09] | [0.79] | [1.16] | [0.43] | [0.68] | [0.09] | [6.75]  | [2.91] | [5.25] | [1.50] | [0.84] |        | [1.69] | [0.26] |        |

## 0745A Foot Kit FTK mm [in]



| Capacity     | Dimensions and locations |                |                |                |                |              |
|--------------|--------------------------|----------------|----------------|----------------|----------------|--------------|
|              | L                        | L1             | H              | H1             | H2             | H3           |
| 110 kg-1.1 t | ø50<br>[ø1.97]           | ø15<br>[ø0.59] | 66.8<br>[2.14] | 54.3<br>[2.14] | 24.2<br>[0.95] | 9<br>[0.35]  |
| 2.2 t        | ø50<br>[ø1.97]           | ø15<br>[ø0.59] | 66.5<br>[2.14] | 54.3<br>[2.14] | 24.2<br>[0.95] | 9<br>[0.35]  |
| 4.4 t        | ø70<br>[ø2.76]           | ø15<br>[ø0.59] | 91.2<br>[3.59] | 80<br>[3.15]   | 38.5<br>[1.52] | 17<br>[0.67] |

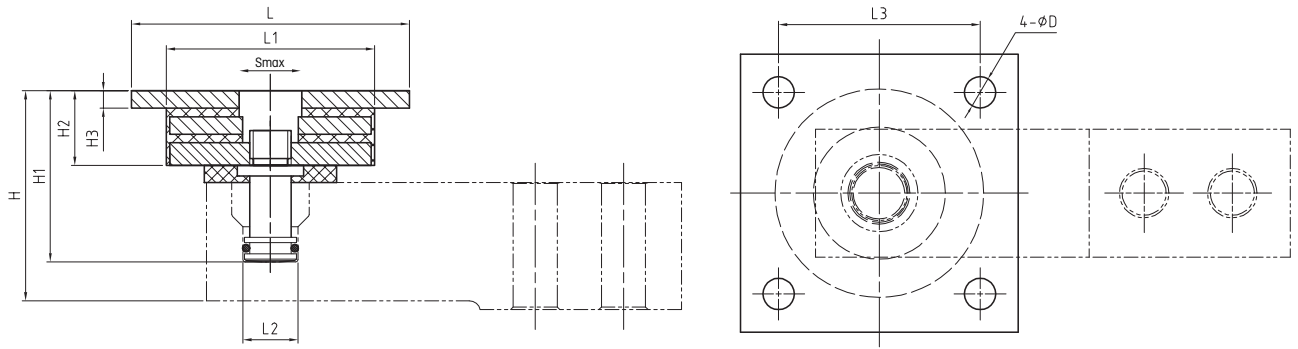
## 0745A Expansion Kit EK mm [in]



| Capacity     | Dimensions and locations |              |     |                  |                |                |              |              |                  |
|--------------|--------------------------|--------------|-----|------------------|----------------|----------------|--------------|--------------|------------------|
|              | L                        | L1           | L2  | L3               | H              | H1             | H2           | H3           | Smax*            |
| 110 kg-1.1 t | ø50<br>[ø1.97]           | 34<br>[1.34] | M8  | ø15<br>[ø0.59]   | 59.6<br>[2.35] | 47.1<br>[1.85] | 24<br>[0.94] | 14<br>[0.55] | ±3 mm<br>[±0.12] |
| 2.2 t        | ø50<br>[ø1.97]           | 34<br>[1.34] | M8  | ø15<br>[ø0.59]   | 63.5<br>[2.50] | 52.3<br>[2.06] | 24<br>[0.94] | 14<br>[0.55] | ±3 mm<br>[±0.12] |
| 4.4 t        | ø60<br>[ø2.36]           | 45<br>[1.77] | M10 | ø21.5<br>[ø0.85] | 73.6<br>[2.90] | 62.4<br>[2.46] | 28<br>[1.10] | 17<br>[0.67] | ±3 mm<br>[±0.12] |

\* Max. lateral displacement

## 0745A Expansion and Vibration Kit EVK mm [in]



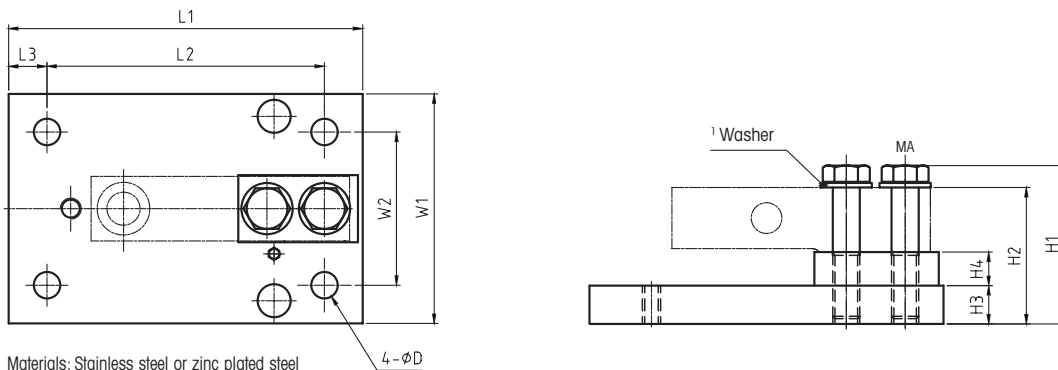
Materials: Stainless steel, NBR 70, Polyethylene foam

| Capacity     | Dimensions and locations |                 |                |                  |              |                |                |                |              |                    |                  |                        |
|--------------|--------------------------|-----------------|----------------|------------------|--------------|----------------|----------------|----------------|--------------|--------------------|------------------|------------------------|
|              | D                        | L               | L1             | L2               | L3           | H              | H1             | H2             | H3           | SHmax*             | SVmax**          | Max. Side load ratings |
| 110 kg-1.1 t | ø9<br>[ø0.35]            | ø80<br>[ø3.15]  | ø58<br>[ø2.28] | ø15<br>[ø0.59]   | 58<br>[2.28] | 56.6<br>[2.23] | 44.1<br>[1.74] | 21.5<br>[0.85] | 5<br>[0.20]  | ±2.8 mm<br>[±0.11] | 1 mm<br>[0.04]   | 2100N                  |
| 2.2 t        | ø9<br>[ø0.35]            | ø80<br>[ø3.15]  | ø58<br>[ø2.28] | ø15<br>[ø0.59]   | 58<br>[2.28] | 60.5<br>[2.38] | 49.3<br>[1.94] | 21.5<br>[0.85] | 5<br>[0.20]  | ±3 mm<br>[±0.12]   | 1.6 mm<br>[0.07] | 2400N                  |
| 4.4 t        | ø11<br>[ø0.43]           | ø100<br>[ø3.94] | ø72<br>[ø2.83] | ø21.5<br>[ø0.85] | 76<br>[2.99] | 75.6<br>[2.98] | 64.4<br>[2.54] | 30<br>[1.18]   | 10<br>[0.39] | ±3 mm<br>[±0.12]   | 2.2 mm<br>[0.09] | 2800N                  |

\* Max lateral displacement

\*\* Max vertical displacement incl. load cell

## 0745A Base Plate Kit BPK mm [in]



Materials: Stainless steel or zinc plated steel

| Capacity                      | Dimensions and locations |                 |                |                 |                 |                 |                |                |                  |                |                     |                     |
|-------------------------------|--------------------------|-----------------|----------------|-----------------|-----------------|-----------------|----------------|----------------|------------------|----------------|---------------------|---------------------|
|                               | L1                       | L2              | L3             | W1              | W2              | H1              | H2             | H3             | H4               | D              | <sup>2</sup> MAcs   | <sup>3</sup> MAss   |
| 110 kg-1.1 t<br>[250-2500 lb] | 177.9<br>[7.00]          | 152.4<br>[6.00] | 12.7<br>[0.50] | 114.4<br>[4.50] | 89.0<br>[3.50]  | 72.6<br>[2.86]  | 65.1<br>[2.56] | 19.1<br>[0.75] | 15.88<br>[0.625] | 11.2<br>[0.44] | 98Nm<br>[72lb-ft]   | 98Nm<br>[72lb-ft]   |
| 2.2 t<br>[5000 lb]            |                          |                 |                |                 |                 |                 |                |                | 12.7<br>[0.5]    |                |                     |                     |
| 4.4 t<br>[10,000 lb]          | 235.0<br>[9.25]          | 184.2<br>[7.25] | 25.4<br>[1.00] | 152.4<br>[6.00] | 101.6<br>[4.00] | 105.0<br>[4.13] | 90.5<br>[3.56] | 25.4<br>[1.00] | 22.2<br>[0.87]   | 17.5<br>[0.69] | 270Nm<br>[200lb-ft] | 270Nm<br>[200lb-ft] |

<sup>1</sup> Two washers only for 4.4 t  
<sup>2</sup> Torque carbon steel version  
<sup>3</sup> Torque stainless steel version

## 0745A Load Cell Order Information

| Rated capacity | Class          | Cable material and length |              |                 |                 |               |                 |                |
|----------------|----------------|---------------------------|--------------|-----------------|-----------------|---------------|-----------------|----------------|
|                |                | PU 2m (6.6ft)             | PU 3m (10ft) | PU 5m (16.6ft)  | PU 10m (33ft)   | FEP 3m (10ft) | FEP 5m (16.6ft) | FEP 10m (33ft) |
| 110kg/250lb    | 0.03%          | 30129790                  | 30129729     | <b>30129791</b> | 30129792        | 30129793      | 30129794        | 30129795       |
| 220kg/500lb    | <b>C3/N5K</b>  | 30091034                  | 30129604     | <b>30091046</b> | 30094384        | 42111204      | 30094412        | 30094432       |
| 220kg/500lb    | <b>C6/N10K</b> | 30091035                  | 30129605     | <b>30091047</b> | 30094385        | 42111205      | 30094413        | 30094433       |
| 550kg/1.25klb  | <b>C3/N5K</b>  | 30091038                  | 30129606     | <b>30091050</b> | 30094388        | 42111224      | 30094416        | 30094436       |
| 550kg/1.25klb  | <b>C6/N10K</b> | 30091039                  | 30129607     | <b>30091051</b> | 30094389        | 42111225      | 30094417        | 30094437       |
| 1.1t/2.5klb    | <b>C3/N5K</b>  | 30091042                  | 30129608     | <b>30091054</b> | 30094392        | 42111244      | 30094420        | 30094440       |
| 1.1t/2.5klb    | <b>C6/N10K</b> | 30091043                  | 30129609     | <b>30091055</b> | 30094393        | 42111245      | 30094421        | 30094441       |
| 2.2t/5klb      | <b>C3/N5K</b>  | 30091026                  | 30039031     | <b>30039033</b> | 30094396        | 30094404      | 30094424        | 30094444       |
| 2.2t/5klb      | <b>C6/N10K</b> | 30091027                  | 30039032     | <b>30039034</b> | 30094397        | 30094405      | 30094425        | 30094445       |
| 4.4t/10klb     | <b>C3/N5K</b>  | 30091030                  | 30039041     | 30039043        | <b>30094400</b> | 30094408      | 30094428        | 30094448       |
| 4.4t/10klb     | <b>C6/N10K</b> | 30091031                  | 30039042     | 30039044        | <b>30094401</b> | 30094409      | 30094429        | 30094449       |

Bolded entries are stocked

## 0745A Load Cell Options

| Rated capacity | Item No.                  |                            |                     |                             |                 |                  |
|----------------|---------------------------|----------------------------|---------------------|-----------------------------|-----------------|------------------|
|                | Base Plate Kit<br>BPK, CS | Base Plate Kit<br>BPK, 304 | Expansion Kit<br>EK | Expansion + Vibr<br>Kit EVK | Foot Kit FTK    | Adapter, Conduit |
| 110kg/250lb    | <b>30265369</b>           | <b>30265370</b>            | <b>72208662</b>     | <b>72208670</b>             | <b>72208674</b> | <b>30095581</b>  |
| 220kg/500lb    |                           |                            |                     |                             |                 |                  |
| 550kg/1250lb   |                           |                            |                     |                             |                 |                  |
| 1100kg/2500lb  |                           |                            |                     |                             |                 |                  |
| 2200kg/5000lb  | <b>30265371</b>           | <b>30265372</b>            |                     |                             |                 |                  |
| 4400kg/10000lb | <b>30265373</b>           | <b>30265374</b>            | <b>72208663</b>     | <b>72208671</b>             | <b>72208675</b> |                  |

Bolded entries are stocked

## 0745A Load Cell Cable Colours

| Colour | Function     |
|--------|--------------|
| Green  | + Excitation |
| Black  | - Excitation |
| White  | + Signal     |
| Red    | - Signal     |
| Yellow | Shield*      |

\* Connected to spring element

## Global Approvals

The 0745A is provided with all listed approvals. No need to think about options and additional charges. Simplifies the conduct of global business, order processing and service-part stocking.



## Weighing Electronics

METTLER TOLEDO offers a complete family of electronics from simple weighing to application solutions for filling, stock control, batching, formulation, counting, checkweighing.



## METTLER TOLEDO Service

Our extensive service network is among the best in the world and ensures maximum availability and service life of your product.

### METTLER TOLEDO Group

Industrial Division  
Local contact: [www.mt.com/contacts](http://www.mt.com/contacts)

Subject to technical changes  
© 10/2020 METTLER TOLEDO. All rights reserved  
Document No. 44099791 A  
MarCom Industrial

[www.mt.com](http://www.mt.com)

For more information

